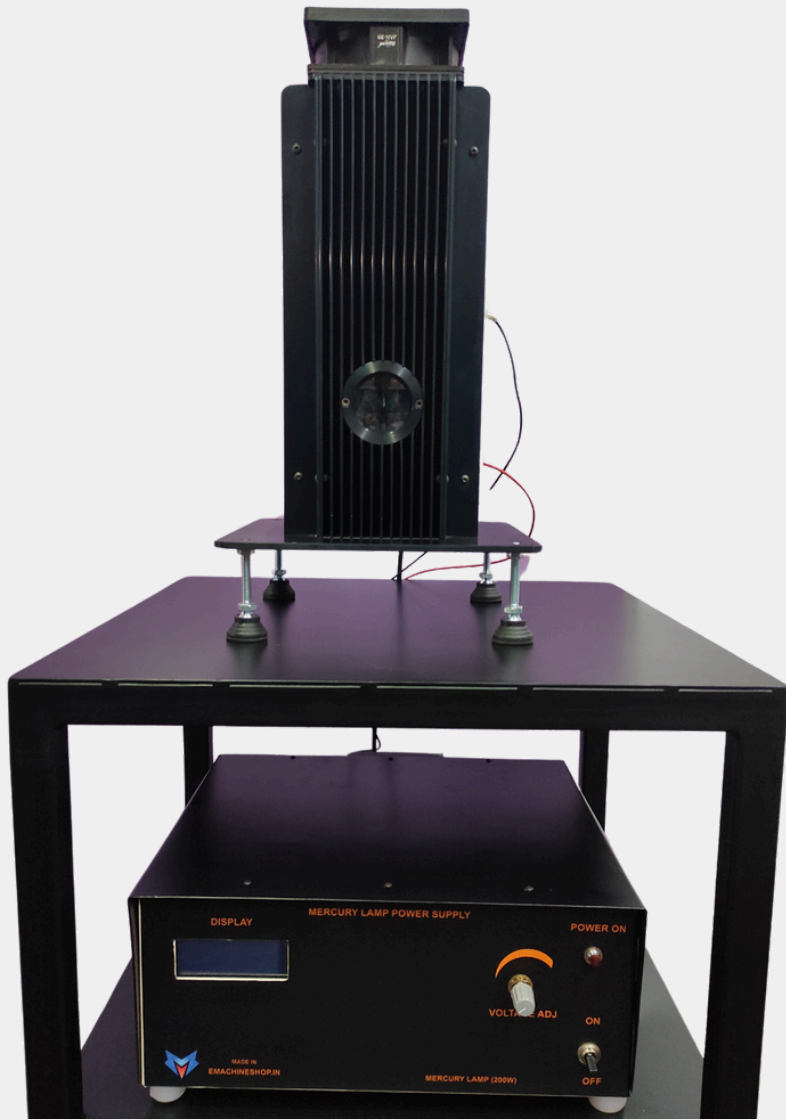


# MERCURY SHORT LAMP | 112

112 - Mercury Short Lamp



### Key Features

#### High-intensity Illumination

Produces powerful UV and visible light ideal for industrial and laboratory applications.

#### Adjustable Voltage Control

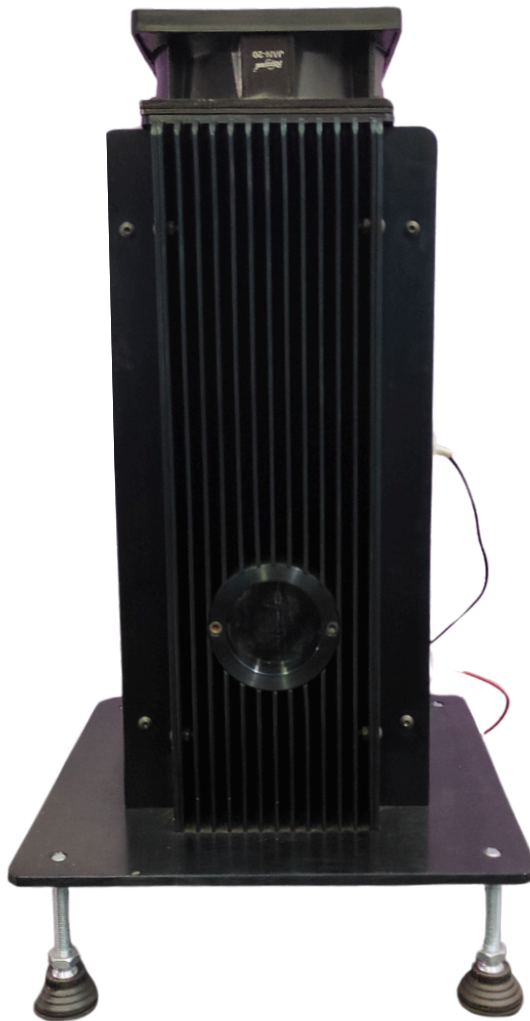
Comes with a controller box featuring a digital display and a voltage regulation knob (max 53V).

#### Customizable Mounting

The lamp includes adjustable height mechanisms and T-nut fasteners for secure and flexible installation.

#### Robust Construction

Designed with a heat sink and durable components to withstand high pressure and temperature.



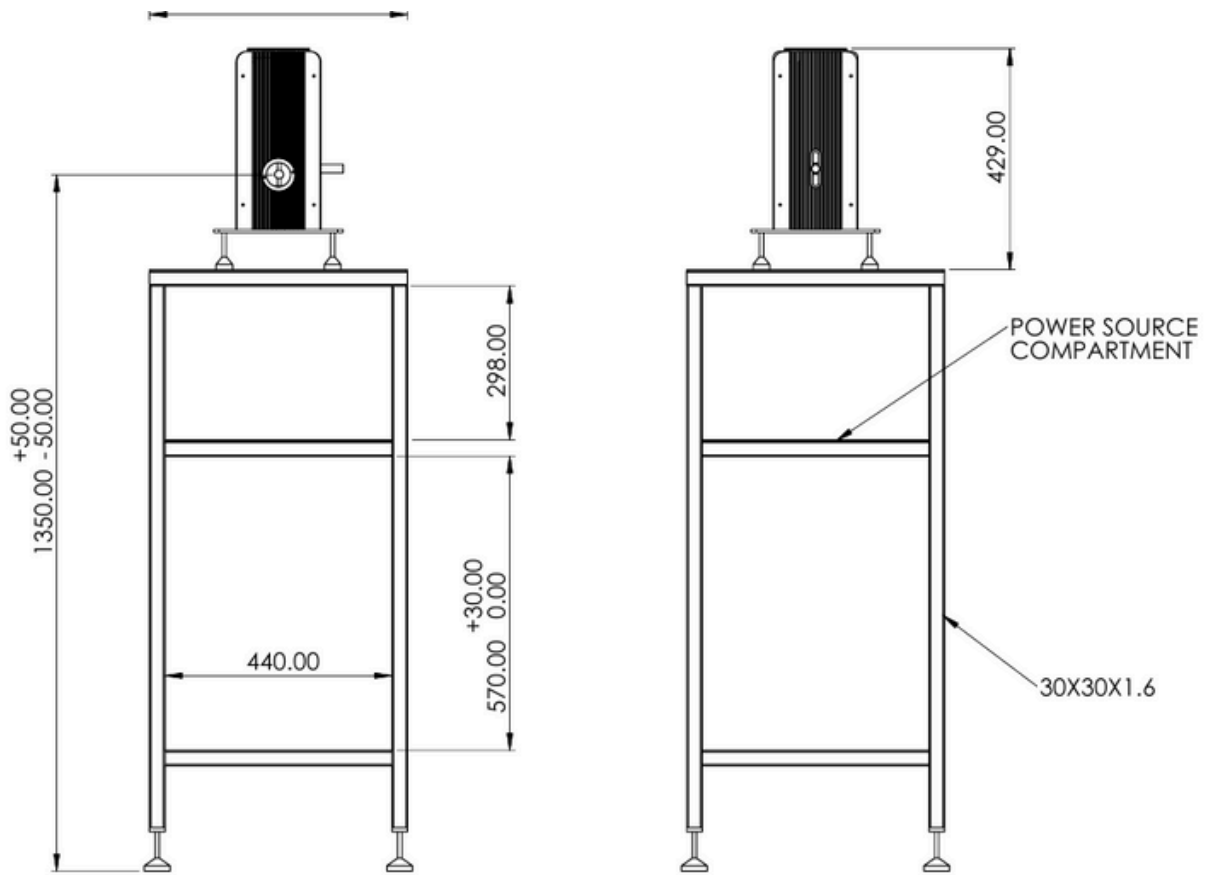
### Construction Details

- Fastened to heat sink (Ø40mm)
- Mounted on a mercury lamp holder and clamp
- Adjustable height using the knob
- Placement based on Fig 1.1 and Fig 1.2 (available in manual)

Feature	Details
Max Operating Voltage	53V
Installation Distance	1m from wall, 3.65m to glass stand
Lamp Operating Temp	900-1050°C
Operating Pressure	Up to 20 atmospheres
Mounting Hardware	Knob with T-nut, heat sink
Safety Compliance	Requires UV & IR protection

# 112 - MERCURY SHORT LAMP

2D - Drawing



Feature	Dimension (mm)	Notes
<b>Total height to lamp center</b>	1350 ± 50	From ground to lamp center
<b>Power source compartment height</b>	298	Compartment for control box
<b>Stand width</b>	440	Distance between the inner vertical legs
<b>Lower compartment height</b>	570	From bottom of stand to power source section
<b>Vertical profile section</b>	30 × 30 × 1.6 mm	Tubular steel profile used for the structure
<b>Lamp housing height</b>	429	Height of the black lamp housing

## EMACHINESHOP



3/2, Swarnambigai street, Ekkatuthangal,  
Chennai, Tamil Nadu 600032



[sales@emachineshop.in](mailto:sales@emachineshop.in)



[www.emachineshop.in](http://www.emachineshop.in)

**Where Precision Meets Innovation**