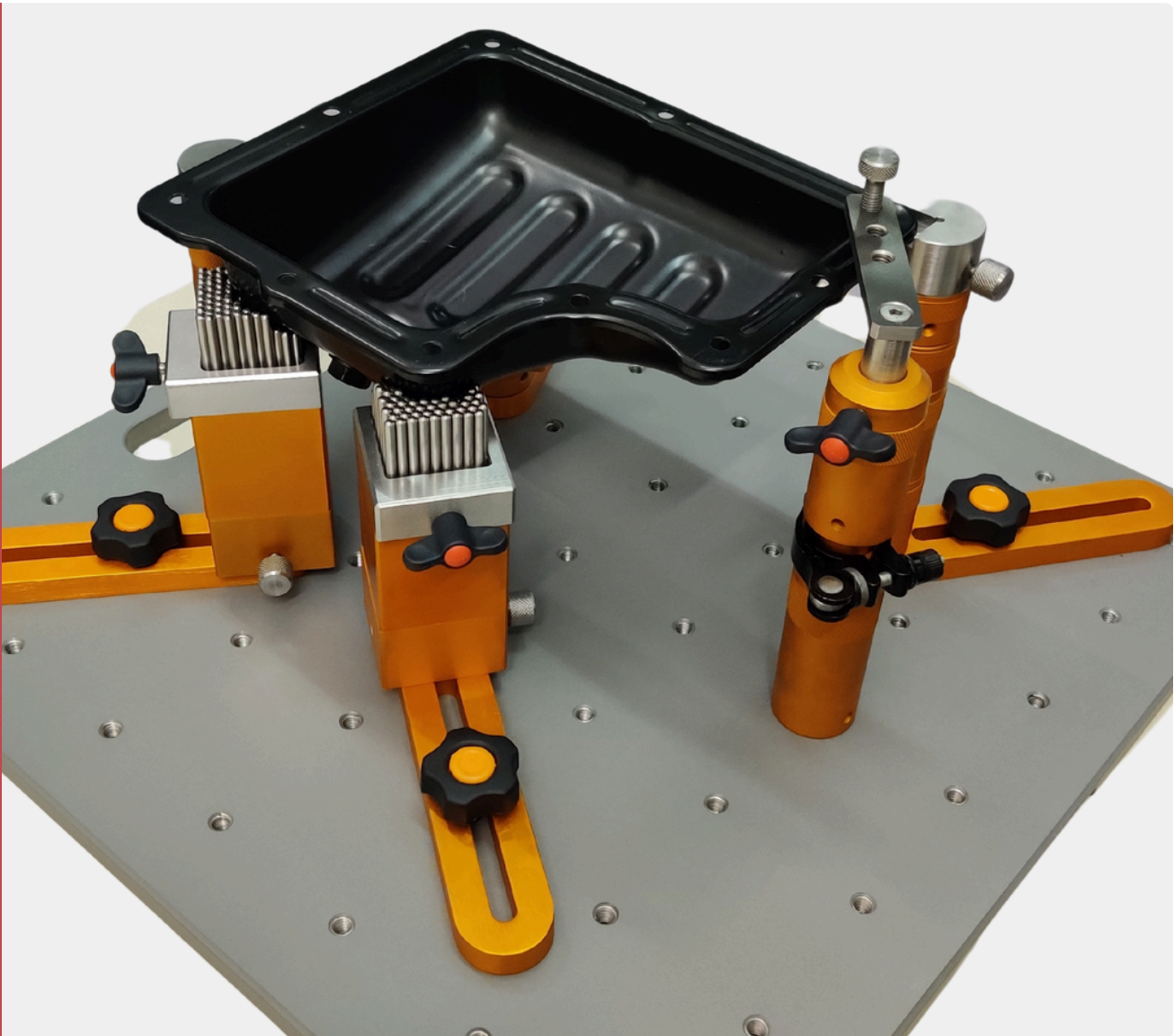


MATRIX

| 122



122 - Matrix



A Matrix Work Holding System is an advanced modular clamping solution designed for secure and flexible workpiece positioning. It ensures reliable fixation while allowing for easy adjustments to accommodate various shapes and sizes.

Key Features: Adaptive Clamping: The system utilizes a precision matrix of pins that conform to the shape of the workpiece, providing uniform and secure holding without excessive pressure points.

Secure Fixation: Featuring a Side Keeper Plate, T Nut, Flower Knob, and Suitable Tenon, this system guarantees firm clamping for machining, inspection, and assembly applications.

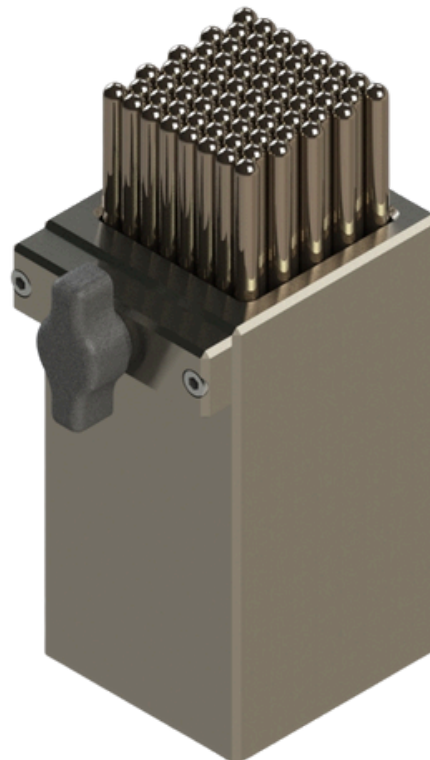
Material & Finish: Manufactured from Alloy Steel with an Electroless Nickel Plated finish, offering high durability, wear resistance, and corrosion protection

Highlight:

- Designed for High-Performance Work Holding
- Unmatched Flexibility & Reliability
- Engineered for Precision & Stability

The Matrix Work Holding System is the ultimate solution for maximizing efficiency, flexibility, and accuracy in industrial work holding applications.

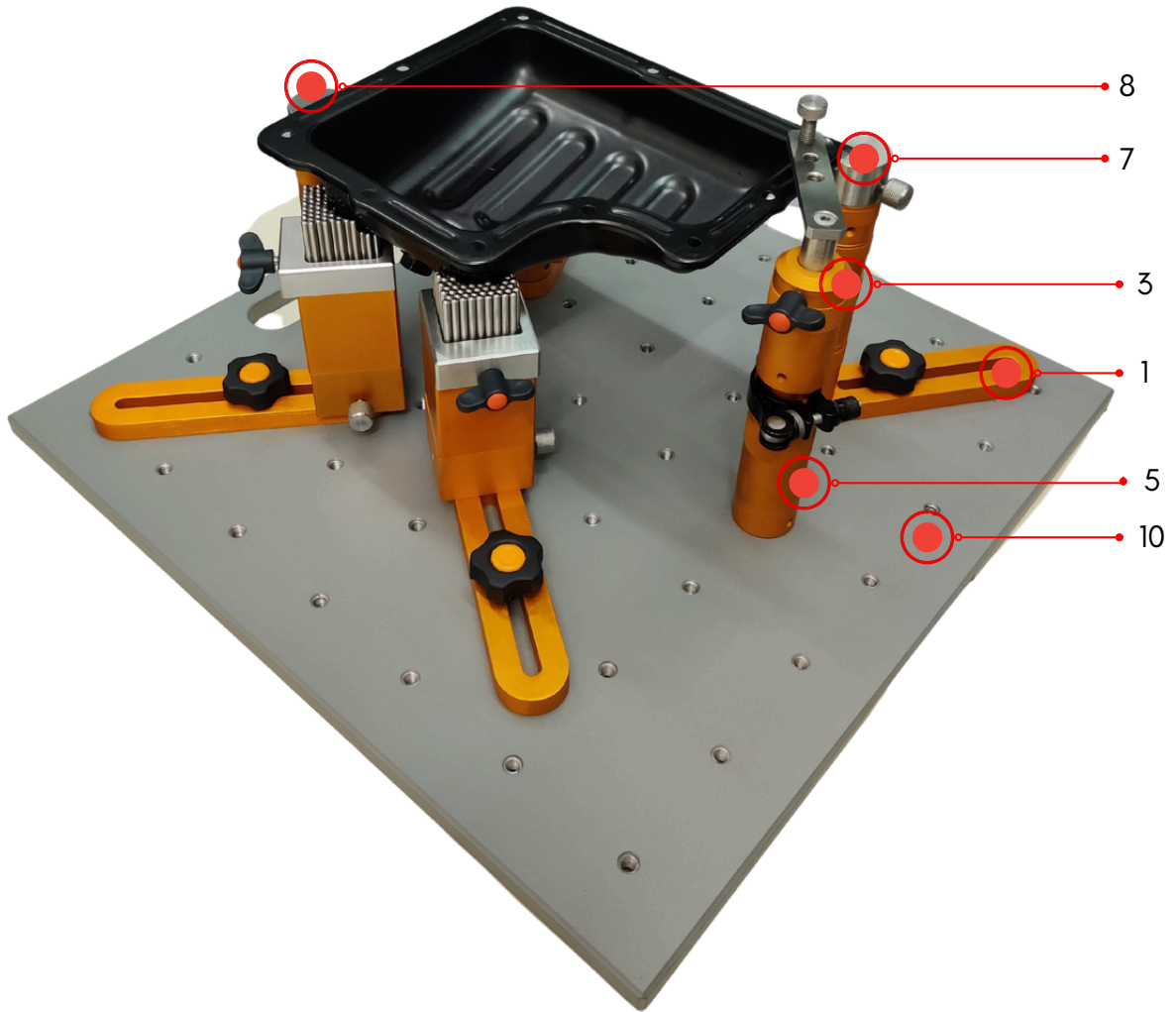
Would you like any refinements or additional details?



FLEX FORM MODULE







S.NO	Part Number	Product Name
1	1224001	BASIS MODULE
2	1224002	FLEX MODULE
3	1224003	FLEX MODULE
4	1224005	JOINT MODULE
5	1224006	FIX MODULE
6	1224008	HEIGHT MODULE
7	1224010	ANGLE STOP MODULE
8	1224011	STOP SUPPORT MODULE
9	1224012	CONE MODULE
10	1225054	BASEPLATE

EMACHINESHOP

3/2, Swarnambigai street, Ekkatuthangal,
Chennai, Tamil Nadu 600032



sales@emachineshop.in



www.emachineshop.in

Where Precision Meets Innovation