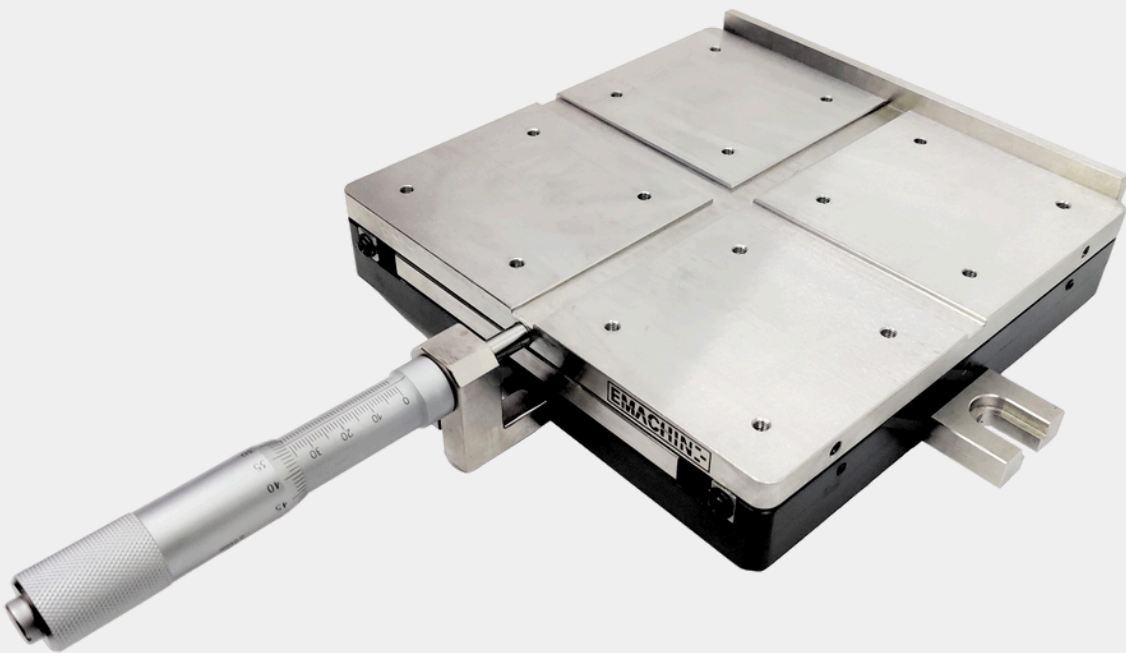


Y-TABLE

| 104



104 - Y Table Rotary



A rotary Y table is a mechanical device that provides rotational movement around a central axis (rotary) and linear movement in two perpendicular directions in the horizontal plane (Y).

Key Features: Precision Movement: The use of precision linear cross roller bearings allows for accurate movement along both the X and Y axes with a specified range of ± 12.5 mm and precision of ± 0.01 mm.

Clamping Mechanism: The inclusion of a Side Keeper plate, T Nut, Flower Knob, and Suitable Tenon suggests secure clamping and fixation of the objects or tools on the table.

Material and Finish: The table is constructed from Alloy Steel and features an Electroless Nickel Plated finish, which provides durability and corrosion resistance.

Highlight: Y tables are built and configured to provide high-performance positioning along multiple axis. High precision, extreme stiffness and accurate alignment due to the single-piece carriage.
100% lubrication-free and completely corrosion-free

Dimension: Three Variants

X-AXIS	Y-AXIS	Z-AXIS
160mm	160mm	70mm
200mm	200mm	70mm
250mm	250mm	70mm

2D - Drawing

EMACHINESHOP



3/2, Swarnambigai street, Ekkatuthangal,
Chennai, Tamil Nadu 600032



sales@emachineshop.in



www.emachineshop.in

Where Precision Meets Innovation